

SRS patch Unlock Manual

Version 1.0 - 9 March 2010

Samsung Remote Server - *Think, Save \$, Unlock*

Patch unlock + Debrand* Samsung mobile phones using SRS solution

* Debranding is the removal of Telecom provider logos, pictures, themes etc. and often gives you more space to store your own pictures and also makes the phone faster. In some rare cases it even unlocks new functionality on the phone.

** Debranding only takes place when you update your phone software with a non branded firmware versions.

Attention: Make sure battery is fully charged!

This tutorial is the [Patch unlock manual](#), debranding can be a side product of the process. This is not the 'debrand / update firmware' manual, there is a different manual for this. This manual is only necessary to follow if the SRS client says 'patch unlock' in the instructions or if a SRS support person tells you to use this process as some Samsung phones contain a bug which only allows them to be unlocked / repaired using this method.

Difficulty rating: moderate

Estimated time: 10 - 15 minutes

You need:

- Fully charged battery (important!)
- Stable internet connection **Note** Do not use 3G modem (especially Huawei) while unlocking 3G Samsung as these conflict!
- SRS service software (client)
- Original Samsung usb data cable (often comes with the phone, if not buy it at any mobile phone store / webshop)
- A SRS server login (get it at; www.unlocksamsungonline.com)

Preparations:

- Uninstall 'Samsung PC studio' software and 'Microsoft Active Sync' and any 3G / UMTS Modem software from your computer
- Put the original working simcard inside the phone (if you don't have the original simcard don't put any simcard in the phone)
- Download the latest SRS client installer <http://www.unlocksamsungonline.com/files/srs-setup.exe>
- Double click the file and run the installer
- Start SRS client ('Start' -> 'Programs' -> 'Simlock Remote Client' -> 'SRS Samsung Remote Unlock Client')

If you get any errors please run 'C:\Program Files\Samsung Remote Client\reg-ocx.cmd' and make sure you have a internet connection

Vista note; right click 'Samsung Remote Unlock Client' then choose 'run as' then choose 'administrator'

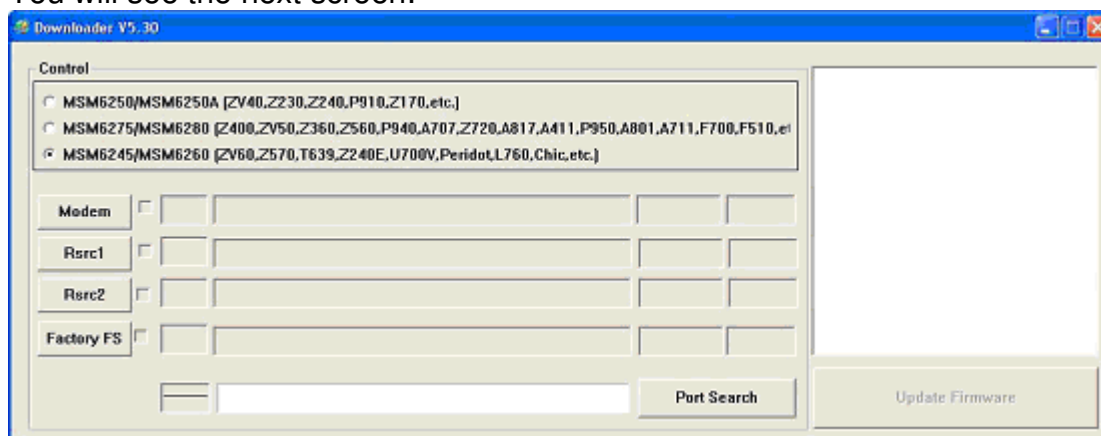
- Login using your SRS username and password
- Click 'Go Support' button and go to 'Samsung firmwares' then open the folder of your Samsung model
- Download the firmware update package for your Samsung model extract it to your c drive somewhere you can remember easily.

*Special; for the G800 type *#1234# on your phone. Does it say G800L..(where '..' can be anything) then download the G800L update package!!

** If there is no update package for your model, your model is NOT supported for patch unlock.

Updating / Debranding your 3G Samsung

1. Unpack the update package on the c drive in a new folder. (The file you downloaded with the preparation, don't unpack it on your desktop!)
2. Start the file SRSUPDATE.EXE located in the folder you just unpacked
3. You will see the next screen:



4. Click on 'Modem' and select AMSS.BIN
5. Click on Rsrc1 and select Rsrc.rc1
6. Click on Rsrc2 and select Rsrc.rc2
7. Click on Factory FS and select FactoryFS.ffs

Your screen will look something like this:



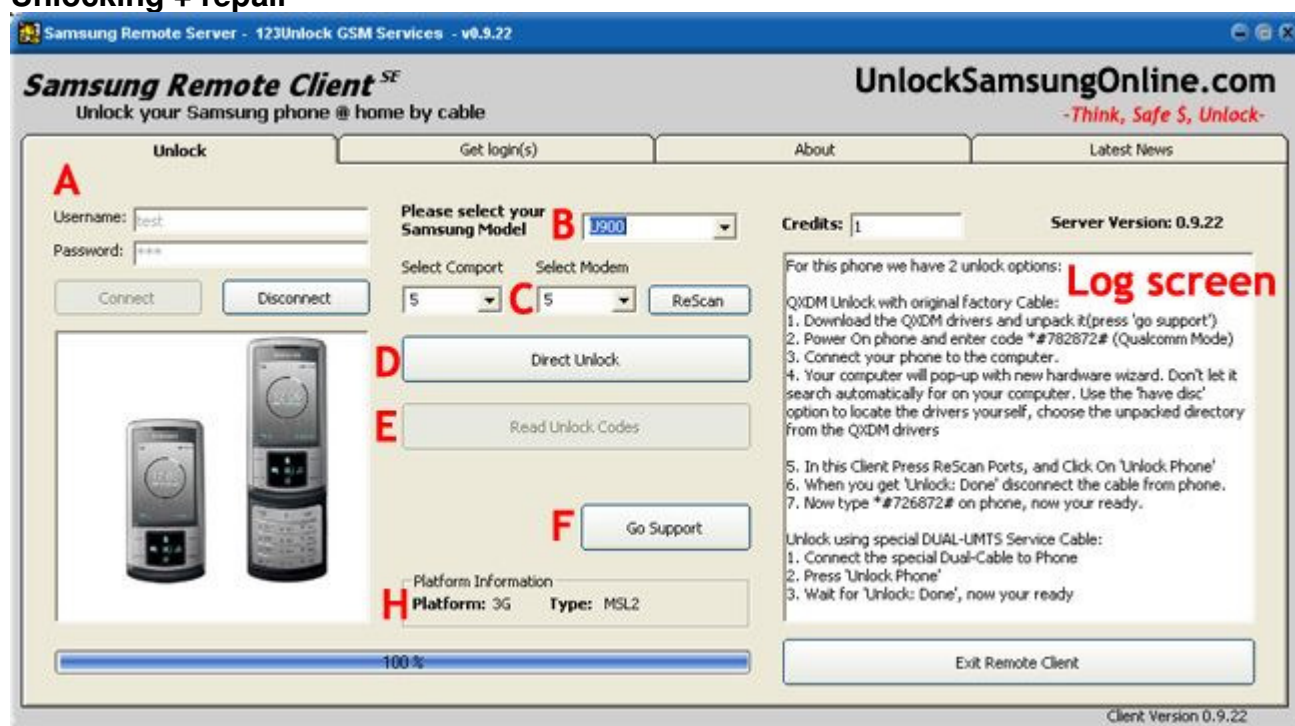
8. Don't forget to tick all the Modem, Rsrc1, Rsrc2 and Factory FS options like in the screen above!
9. Turn off your phone
10. Press the '9' on your phone keyboard and at the same time the on/off button. The phone will now go into download mode. You will see a black screen with the word 'DOWNLOAD' in it**.

*For the F700(v) use the 'FN' button instead of the '9'.

** the screen color can differ and the word 'Download' might not always be visible

11. Connect your phone with your computer using the USB data cable. Please plug it into a USB port at the back of your computer
12. Click on 'Port Search'
13. The phone is now detected. (if not the CDMA drivers are not installed correctly or 'Samsung PC studio' is still running)
14. Now press the button 'Update Firmware'
15. The updating has now started. The process takes about 3 - 5 minutes.
16. The phone will now restart itself and you will see a blue screen with:
Welcome to Samsung mobile
Initialising filesystems
Wait 10 seconds.
17. Now the phone will restart again and you are ready for unlocking!
18. **Close SRSUPDATE.exe and remove the cable from the phone!**

Unlocking + repair



1. Open the client ('Start' -> 'Programs' -> 'Simlock Remote Client' -> 'SRS Samsung Remote Unlock Client') and login using your SRS username and password ('A'). Now select your phone model in the dropdown box ('B').
2. You will now see instructions in the white log screen in the client saying 'Go Support' which you already did in the previous part. Enter the following code on your Samsung (phone on, not yet connected, original sim inside the phone OR no sim at all!):
*#782872# and confirm
The phone should say 'Qualcomm mode configured, pls reconnect cable'. If not contact support!
3. Now connect the phone with your computer using the original USB cable
4. Now a new device will be found by Windows. When windows will ask for drivers, don't let it search automatically point it to 'c:\Program Files\Simlock Remote Client\Drivers\QXDM'. After installing both QXDM drivers wait a few seconds until Windows says 'New device is ready for use'.
Also see: [Installling Samsung QXDM drivers](#)
5. After installing both drivers (you are installing 2 drivers when installing the QXDM

drivers) hit the 'rescan' button in the SRS client. It will now find 2 QXDM drivers (QXDM Diagport and QXDM Modem). If these are not found you have not installed the drivers correctly!

6. Enter your username and pass and press connect if you weren't already logged in. Now select 'PATCH' as your phone model from the dropdown box (scroll all the way down).
7. Now click on 'Unlock phone'
You will get a message asking you if you have done the firmware update. You should have done that by now, so just click 'yes'.
8. Now some data gets read from your phone.
9. **Now the unlocking is done.** You can now use any compatible sim card in your Samsung phone.
10. Attention: use the same code you used in step 2 to put your gsm back in the (normal) Samsung mode. Otherwise you will not be able to use Samsung PC studio software.