



Simlock free in 10min UnlockSamsungOnline.com

-Think, Safe \$, Unlock-

Unlock Samsung Online.com

SAMSUNG REMOTE SERVER - THINK, SAVE \$, UNLOCK

Patch unlock + Debrand* Samsung mobile phones using SRS solution

* Debranding is the removal of Telecom provider logos, pictures, themes etc. and often gives you more space to store your own pictures and also makes the phone faster. In some rare cases it even unlocks new functionality on the phone.

** Debranding only takes place when you also have to update your phone software (also called Firmware).

Attention: Make sure battery is fully charged!

This tutorial is [Patch unlock manual](#) and debranding is a side product of the process. This is not the 'debrand / update firmware' manual, there is a different manual for this. This manual is only necessary to follow if the SRS client says 'patch unlock' in the instructions or if a SRS support person tells you to use this process as some Samsung phones contain a bug which only allows them to be unlocked / repaired using this method.

Difficulty rating: moderate

Estimated time: 10 - 15 minutes

You need:

- Fully charged battery
- Stable internet connection **Note** Do not use 3G modem (especially Huawei) while unlocking 3G Samsung as these conflict!
- SRS service software (client)
- Original Samsung usb data cable (often comes with the phone, if not buy it at any mobile phone store / webshop)
- A SRS server login (get it at; www.unlocksamsungonline.com)

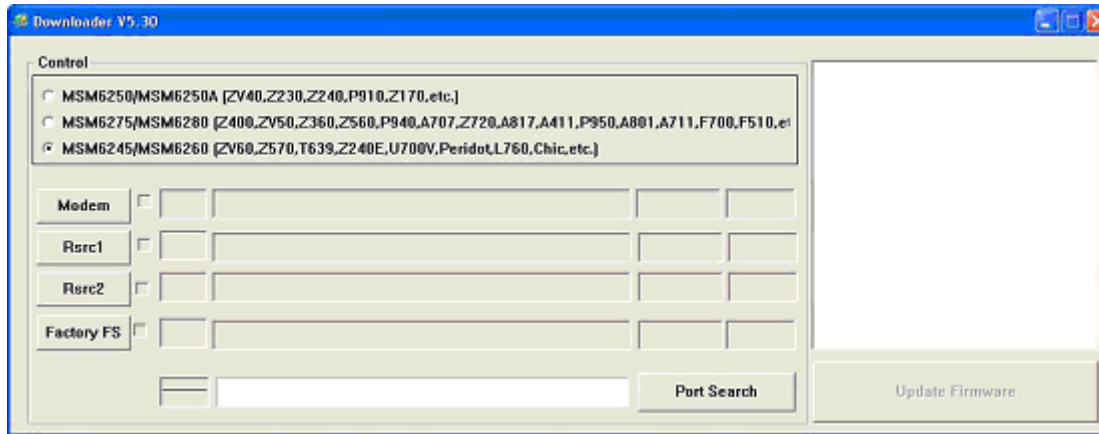
Preparations:

- Download the latest SRS client <http://www.unlocksamsungonline.com/files/samsung.zip>
- Unpack the zip file and login using your SRS login
If you get any errors please run 'reg-ocx.cmd'
Vista note; right click the .exe file then choose 'run as' then choose 'administrator'
- Download the firmware update package for your Samsung model extract it to your c drive somewhere you can remember easily.
Press the button 'Go Support' in the 3G client to download the update package for your phone model *Special; for the G800 type *#1234# on your phone. Does it say G800L..(where '..' can be anything) then download the G800L update package!!
** If there is no update package for your model, your model is NOT supported for patch unlock + debranding.
- Download the gsm drivers for the flashing part: [http://www.unlocksamsungonline.com/files/cdma\(3G\)_drivers.zip](http://www.unlocksamsungonline.com/files/cdma(3G)_drivers.zip)
- Download the QXDM drivers for unlocking: [http://www.unlocksamsungonline.com/files/QXDM_Drivers_07\(new\).zip](http://www.unlocksamsungonline.com/files/QXDM_Drivers_07(new).zip) and unpack them to a new folder

Updating / Debranding your 3G Samsung

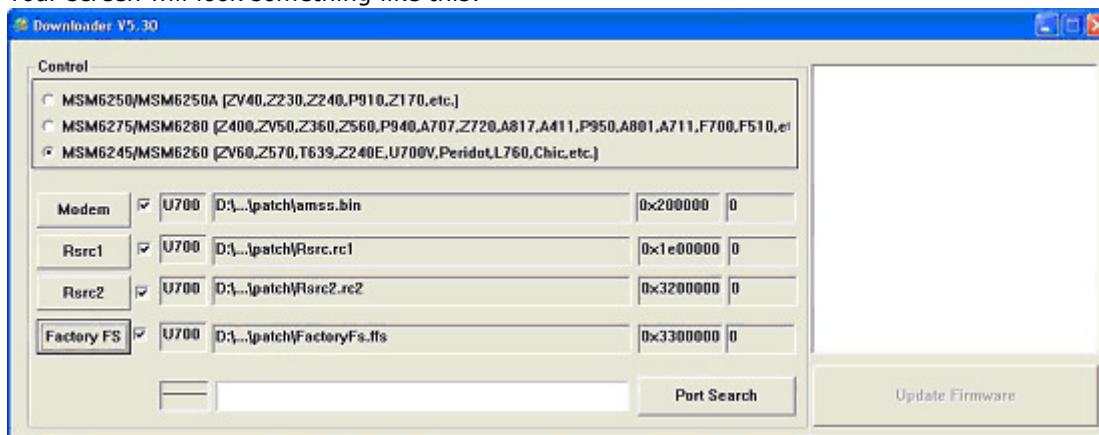
1. Install the CDMA drivers (unpack the CDMA drivers and start setup.exe).
2. Unpack the update package on the c drive in a new folder. (The file you downloaded with the preparation, don't unpack it on your desktop!)
3. Start the file SRSUPDATE.EXE

4. You will see the next screen:



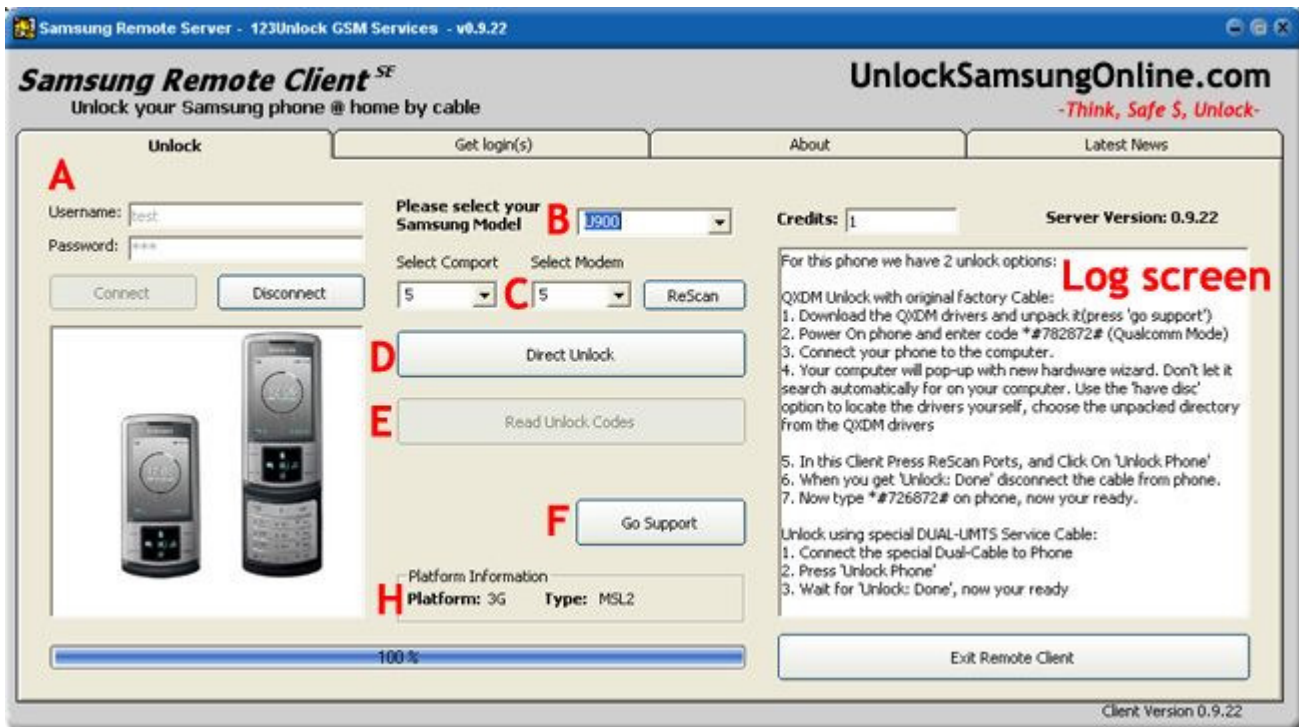
5. Click on 'Modem' and select AMSS.BIN
6. Click on Rsrc1 and select Rsrc.rc1
7. Click on Rsrc2 and select Rsrc.rc2
8. Click on Factory FS and select FactoryFS.ffs

Your screen will look something like this:



9. Don't forget to tick all the Modem, Rsrc1, Rsrc2 and Factory FS options like in the screen above!
10. Turn off your phone
11. Press the '9' on your phone keyboard and at the same time the on/off button. The phone will now go into download mode. You will see a black screen with the word 'DOWNLOAD' in it.
**For the F700(v) use the 'FN' button instead of the '9'.
12. Connect the phone with the data cable (and of course also with the computer)
13. Click on 'Port Search'
14. The phone is now detected. (if not the CDMA drivers are not installed correctly or PC studio is still running)
15. Now press the button 'Update Firmware'
16. The updating has now started. The process takes about 3 - 5 minutes.
17. The phone will now restart itself and you will see a blue screen with:
 Welcome to Samsung mobile
 Initialising filesystems
 Wait 10 seconds.
18. Now the phone will restart again and you are ready for unlocking!
19. **Close SRSUPDATE.exe and remove the cable from the phone!**

Unlocking + repair



1. Open the client, login using your SRS username and password ('A') then select the model you want to unlock using the dropdown box ('B').
2. You will now see some instructions in the white log screen in the client.
 - a. Does it say to press the button 'Go support' you should have done the update process like described above. When you have done the update process press the following code in your Samsung (phone on, not yet connected, original sim inside the phone OR no sim at all!): `*#782872#`. Now connect the cable from your computer to your gsm.
 - b. If the instructions in the client say to type `*#9998*324#` please do so then hit the '9' and then the '6' on your keyboard and select 'Qualcomm usb mode' *If the code `*#9998*324#` does nothing then try `*#782872#`
3. Now connect the phone with your computer using the original usb cable
4. Now a new device will be found by Windows. When windows will ask for drivers, don't let it search automatically point it to the QXDM drivers folder. After installing both QXDM driver wait a few seconds until Windows says 'New device is ready for use'.
Recommended; use the QXDM driver install manual to install the drivers correctly now!
5. After installing both drivers (you are installing 2 drivers when installing the QXDM drivers) hit the 'rescan' button in the SRS client. It will now find 2 QXDM drivers (Diagport and Modem). If these are not found you have not installed the drivers correctly!
6. Enter your username and pass and press connect if you weren't already logged in. Now select the model you want to unlock again from the dropdown box.
7. Now click on 'Unlock phone'
For some models you will get a message asking you if you have done the firmware update. You should have done that by now, so just click 'yes'.
8. Now some data gets read from your phone.
9. **Now the unlocking is done.** You can now use any compatible sim card in your Samsung phone.
10. Attention: use the same code you used in step 2 to put your gsm back in the (normal) Samsung mode. Otherwise you will not be able to use Samsung PC studio software.